

Question

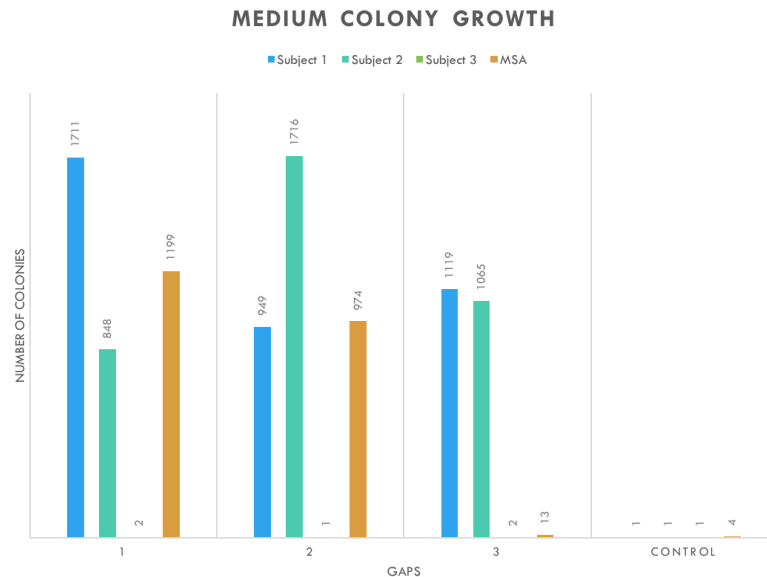
Between which toe has the most bacterial growth.

Hypothesis

The most bacterial growth would be between the big toe and the second toe.

Results

Bacterial contamination between the toes is a common occurrence among college students. With either sharing a shower with suitemates or hall bathrooms with strangers, bacteria



between the toes is common.

In figure 1, the graph compares the medium colony bacterial growth between the different gaps. The gap with the most bacterial growth is Gap 1 with a total of 3760 medium colonies. While Gap 2 had a total of 3639 medium colonies.

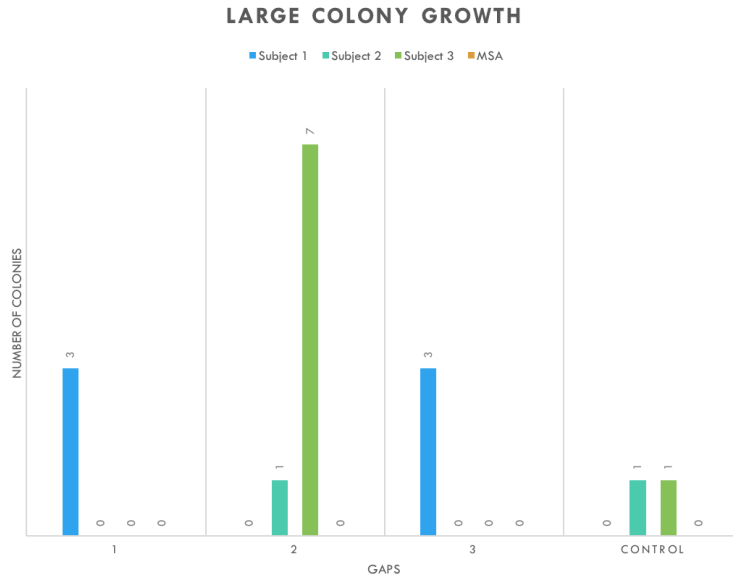
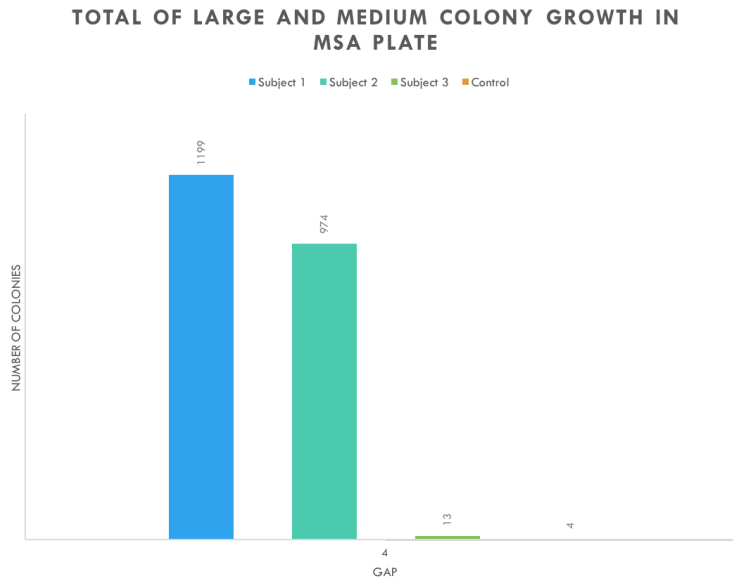


Figure 2 shows the total of large colony growth between gaps. The Gap with the most



bacterial growth is Gap 2 with a total of 8 large colonies. Gap 1 and 3 had a total of 3 colonies.

Figure 3 compares the total number of large and medium colony growth on the MSA plate in the fourth toe gap. Subject 1 had a total of 1199 colonies grow while subject 2 had a total of 974 colonies grow. Subject 3 had 13 colonies and the control group had 4 colonies.