

# A Campus Garden

*How more greenspaces on campus impact not only the campus, but the students as well*



You may have noticed that there aren't any colorful flowers and vegetables on campus, but there are many mulch patches and grass patches. This may make you wonder:

How can a **garden** improve the **sustainability and beautification** of Longwood University's campus in the dining hall?

The answer to this question may have implications for the sustainability efforts on the Longwood Campus.



The Wheeler Garden, as pictured above, is the source for our recent desire to implement a campus garden. Our interviewee, Alex Fink, informed us that this garden was an honor's garden that lasted for about five or six summers. Many faculty, staff, students, and locals helped with the garden, so there is definitely interest. This garden contained vegetables mainly, and occasionally flowers. The reason this garden did not last, was because the lack of participation during the summer came to a halt due to students traveling home and out of town.

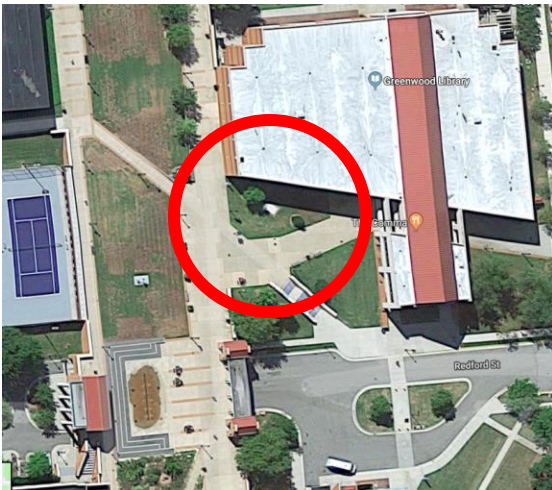
# Longwood



# Sustains



This image shows the top view of campus and where future possibilities for gardens would be best in relation to the rest of the campus. The red circle, left, shows the number one prospect for a beneficial garden whereas the purple circle, right, is hopefully where campus gardens will expand to.

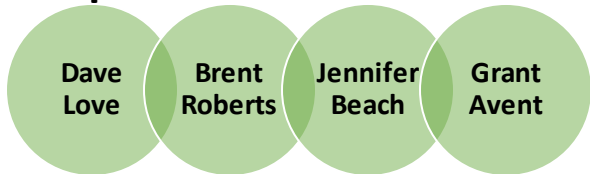


The red circle is Greenwood Library which is a common spot for students, and the purple circle is around Dorrell Dining Hall, for easy access to plants.

## SUMMARY and FUTURE STEPS

After meeting with the Dean of the Cormier Honors college, Dr. Alix Fink, our future steps consist of contacting Brent Roberts (Dean of the Greenwood Library) and Jennifer Beach (worked on the Wheeler Garden) to see if our suggested garden locations are a possibility. If so, then our next step would be to find out what types of herb and flowers not only the students would be interested in seeing on campus, but discussing with Mr. Avent what herbs would be helpful in the dining hall.

## People to Get in Touch With:



## STUDENT ENGAGEMENT

Our plan is to start with a smaller group on campus, the honors college. This is because they will serve as a good sample of the student body as a whole and were also involved in the previous garden. Using surveys, we will spread awareness on the garden project and attempt to gain some early recruits. From there, we will advertise the project in the library and dining hall, before finally, with a joint group of faculty and students, presenting our plan to the president.