

ART 213 Ceramics: Final Proposal

Angelika Gomez

Statement: This artwork will connect with land life and sea life. The different animals and plants of the two different worlds will connect. This artwork will show how we live on a planet that has two different sides to it and it will give a bigger insight into what we perceive as everyday life.

Daumante Stirbyte



Carol Gouthro





Bernard Palissy
About 1510-1580

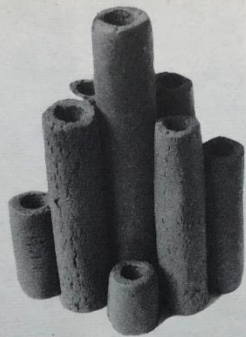


Pablo Picasso





141 S



142 B 13



143 B 14



22 A



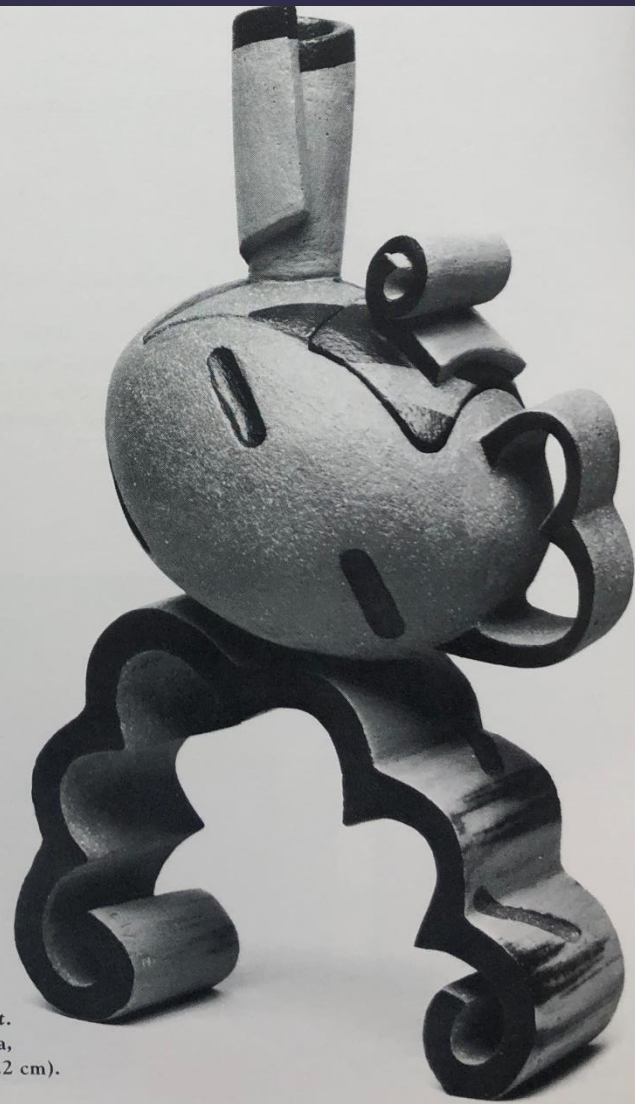
23 A



24 A



25 A



el.
apot.
lata,
10.2 cm).